

The Navaho | Ranch Plan



Ready to move? Choose this newly built and wonderfully furnished ranch-style home that boasts many great amenities.

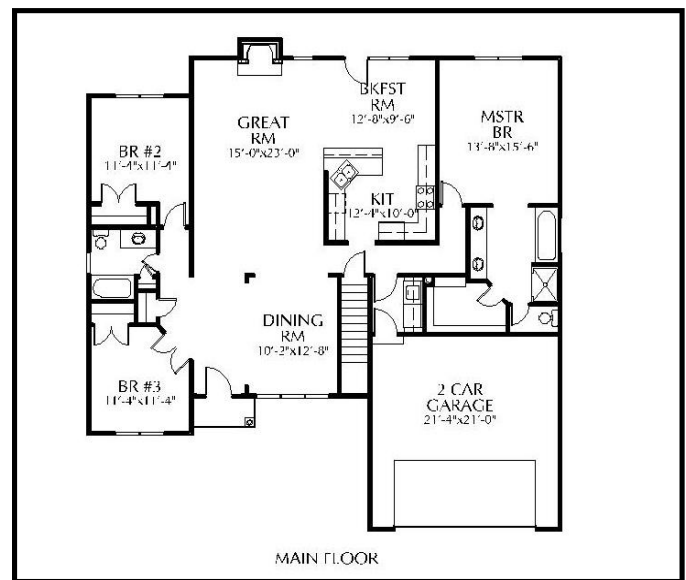
This home features a spacious floor plan with 3 bedrooms, 2 baths, and approximately 1,800 sq. ft. of living space on the main floor. A finished walk-out lower level could have 2 more bedrooms, a family room, and a 3rd full bath.

Take a swim in the nearby community pool or enjoy fabulous walks on the nature trails. The home is within minutes of superb Martin City dining and much new shopping at 135th and Stateline.

Blue River Woods

www.blueriverwoods.com

Braden Construction - Steve Johnson



Find out more and take a virtual tour at www.koehlerbortnick.com, or call our free 24-hour information line at 1-800-895-7167. Request more on Code 1866

THE
KOEHLER | BORTNICK
TEAM

REECE & NICHOLS
Real Estate • Mortgage • Title • Insurance

(913) 239-2134
Joel Viterna